



# *World Tri Star Tools Inc.*



2880 N. Berkeley Lake Rd. Suite 1  
Duluth, GA 30096  
TEL: 770-622-3025  
FAX: 770-622-3027



**We provide a courteous service with prompt action, accumulated and advanced techniques, and much more!**

Our company is managing with the total system service which is consistent with all the layout, the machine design, the electric and the production.

We offer each customer a courteous service with prompt response, accumulated and advanced techniques.

Moreover, with using our present equipment and systems, we raise operation rates and achieve cost reduction.

Our performance and techniques promote intelligent way for the factory line performs creating total plan which gave top priority for the production and a design, a manufacture, and a maintenance.

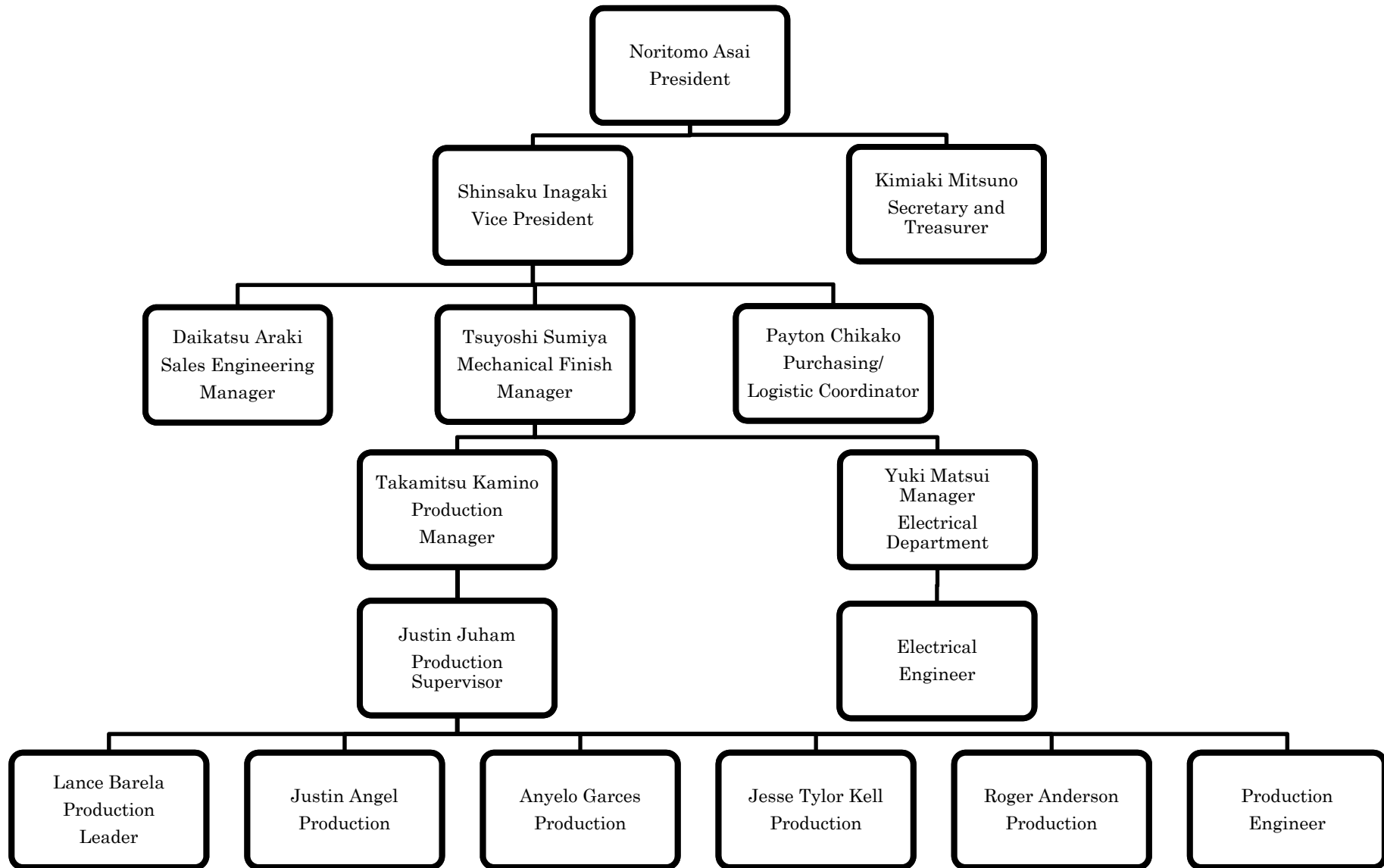
**<<Work contents>>**

**Automatic assembling machine/Measuring machine/Inspection machine**

**Carrier device/Robot laborsaving system/Each Cutting implements**

**Other various special-purpose machines**

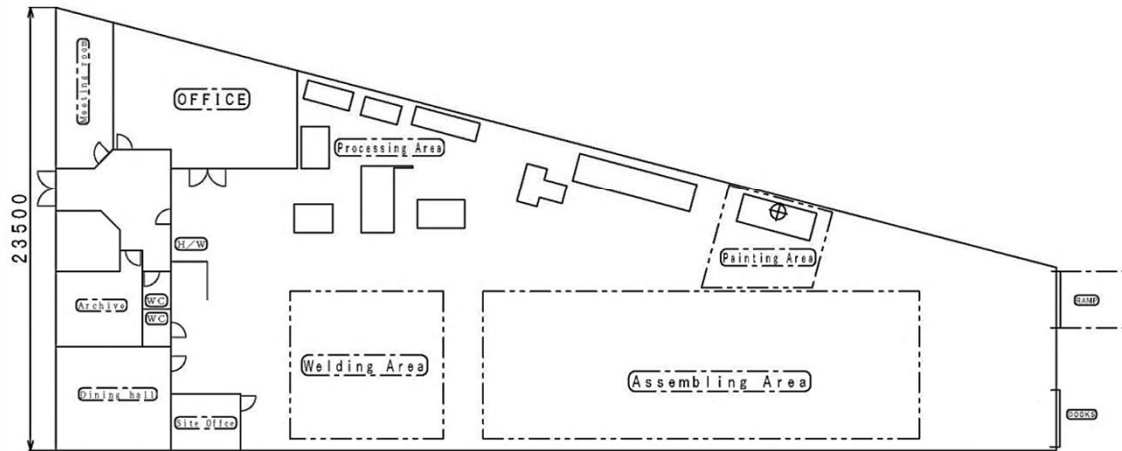
# Organizational chart



# Factory Layout



9,529square feet (885m)



# Equipment List



<Shearing Machine>



<Band Sawing machine>



<Milling Machine>



<Corner Shearing Machine>



<Bending Machine>



<Series Horizontal Lathe>



<Co2 Welder/  
Plasma Blowout>



<Painting Booth>



<Iron Worker Machine>



<Fork Lift>



<Compressor>



<Electric Power >



**Pump Gear In-process  
Gantry Loader**



**Needle Deburring Machine**



**Bush Press Fitting Machine**



Peel Caulking Machine

